

The Project

02/07/2021

A NATIONAL PROJECT WITH PARANÁ DNA

The development of the railroad modal in Paraná based on the tripod of sustainability (environmental, economic and social aspect) innovates in solving the existing bottleneck in the transportation of cargo by railway lines.

Thus, the West Export Corridor or Nova Ferroeste has as premise of connecting the Port of Paranaguá to Maracaju in Mato Grosso do Sul, with the objective of offering an appropriate and efficient modal for the flow of products and goods from Western Paraná, Santa Catarina, Mato Grosso do Sul and Paraguay.

The project's inclusion in the investment portfolio of the Federal Government's **Investment Partnerships Program (PPI)** makes it possible to make it attractive to the private sector and, therefore, to be auctioned on the Stock Exchange (B3).

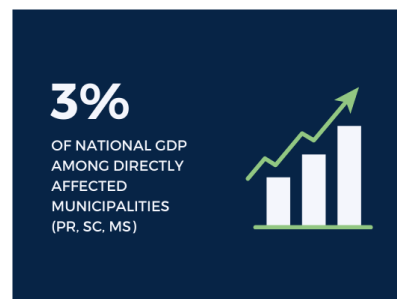
THE NEW RAILWAY SECTION



THE LAYOUT OF THE NOVA FERROESTE

- ||||| 1.567 km long
- ||||| Construction of a new railway between Maracaju and Cascavel
- ||||| Construction of a new route between Guarapuava and Paranaguá
- ||||| Construction of a multimodal extension between Cascavel and Foz do Iguaçu
- ||||| Construction of a new route between Cascavel and Chapecó
- ||||| Revitalization of the current railway section between Cascavel and Guarapuava

THE POTENTIAL OF NOVA FERROESTE



PARANÁ - LOGISTICS HUB

It is estimated that 38 million tons will pass through the rails of the West Export Corridor in the first year. With investments being made in the Port of Paranaguá, the axis potentiates the reduction of export costs - about 28% - reflecting the increase in productivity and competitiveness of the productive sector.

The strategic and privileged geographical position of Paraná (access to a GDP of US\$ 1.7 trillion within a radius of 1,500 km) facilitates entry by open sea to three ports and interports and has the best highway network in southern Brazil, in a clear demonstration of the possibility of integration by different modes.

THE NOVA FERROESTE IS ONE THE ACTIONS THAT SEEKS TO TRANSFORM PARANÁ INTO THE LOGISTICAL HUB OF SOUTH AMERICA

